

**Users' Manual**

**Wellness Steam Shower Cabins (S6)**

# INDEX

- ▶ FCC Requirement
- ▶ Operating Environment
- ▶ Safety Notes
- ▶ Parameter for Steam Cabin
- ▶ Parts Information
- ▶ User's Manual
- ▶ Steam Generator Cleaning
- ▶ Trouble Shooting
- ▶ Circuit Diagram

Please read the user's manual carefully before using the product.

## FCC REQUIREMENT

Changes or modifications not expressly approved by the party responsible for compliance could void the user's authority to operate the equipment.

This device complies with Part 15 of the FCC Rules. Operation is subject to the following two conditions:

- (1) this device may not cause harmful interference, and
- (2) this device must accept any interference received, including interference that may cause undesired operation.

Note: This equipment has been tested and found to comply with the limits for a Class B digital device, pursuant to Part 15 of the FCC Rules. These limits are designed to provide reasonable protection against harmful interference in a residential installation. This equipment generates, uses, and can radiate radio frequency energy, and if not installed and used in accordance with the instructions, may cause harmful interference to radio communications. However, there is no guarantee that interference will not occur in a particular installation. If this equipment does cause harmful interference to radio or television reception, which can be determined by turning the equipment off and on, the user is encouraged to try to correct the interference by one or more of the following measures:

- Reorient or relocate the receiving antenna.
- Increase the separation between the equipment and receiver.
- Connect the equipment into an outlet on a circuit different from that to which the receiver is connected.
- Consult the dealer or an experienced radio/TV technician for help.

## SAFETY NOTES

- The power supply must be installed according to the local standard and with GFCI (Ground Fault Current Interrupter). Test the GFCI before using to confirm its security and validity.
- The earthing for electrical appliances should be connected to fixed earth wire forever.
- To avoid electric shock, replacing of power supply wire should be done by professional electrician or distributor. User should not change it by himself.
- To avoid electric shock, no extending power supply should be used. The socket should be in right position. Broken electric wire should be changed in time.
- It's forbidden to make any change, adding or cutting to the product.
- It's forbidden to use the product after drinking or taking hypnotic medicine.
- Children should use the product under custody from adults.
- Adjust the low water temperature to high water temperature slowly to avoid scald.
- Stop using the product in case user feels uncomfortable.

## ⦿ Parameter for Steam Cabin

Rated Power:  3.0KW  4.5KW

Rated Voltage:  Single Phase AC220V  Double Phase AC240V  
 Single Phase AC110V

Rated Electric Current:  16A  20A

Frequency:  60Hz  50Hz

Power Supply Location:  on wall  On floor

Rated Water Pressure: 0.2--0.6 MPa

Water Supply: DN15 tie-in, hot/cold water

Water Supply Location:  on wall  on floor

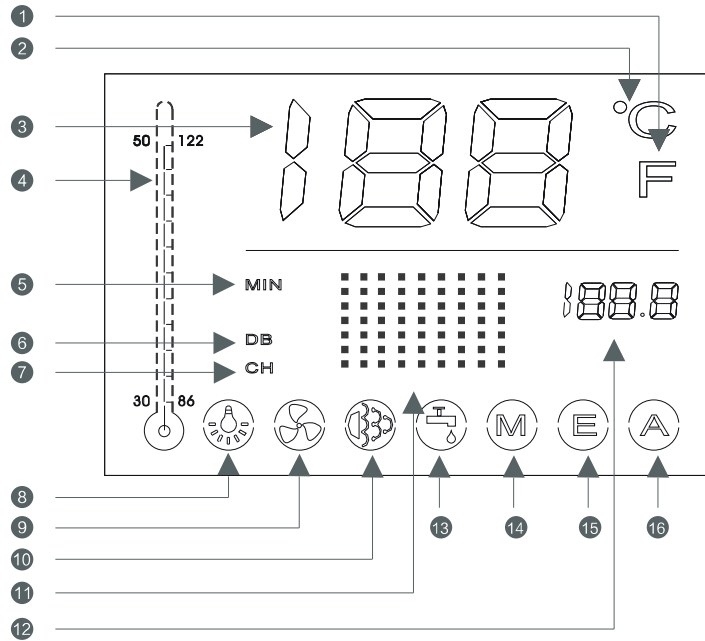
Diameter of Drainage Pipe:  $\phi$  50 (drainage pipe supplied with products)

Length of Drainage Pipe: 1000mm (the maximum length after stretched)



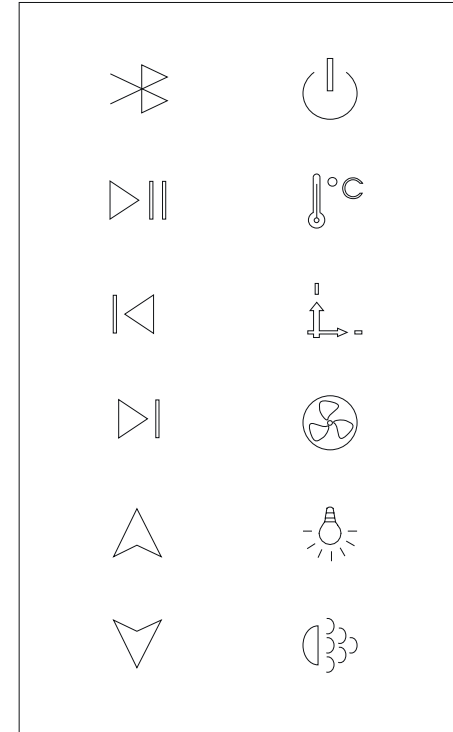
◎ **Parts Information**

LCD DISPLAY



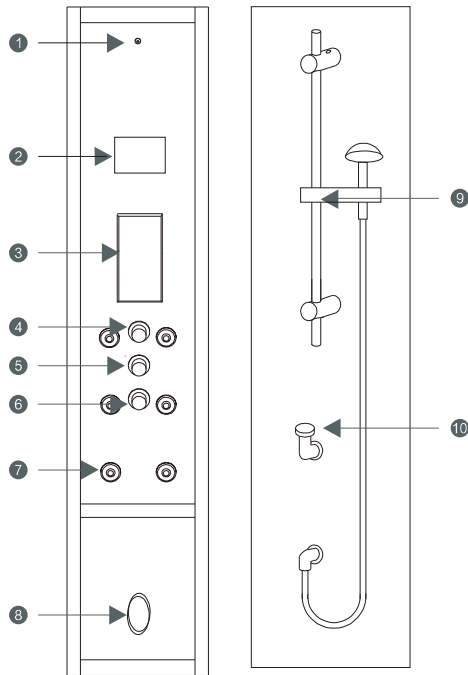
1	Fahrenheit degree	8	Chromatherapy on/off
2	Celsius degree	9	Ventilator on/off
3	Temperature	10	Steam on/off
4	Temperature indicator	11	Power on indicator
5	Time setting	12	Bluetooth on/off
6	Volume	13/15	Standby for future upgrade
7	Musical selection	14/16	Standby for S8 system

◎ **Control Panel for steam cabin**



	Bluetooth		+ Adjustment		System time setting
	Play/Pause		- Adjustment		Ventilator on/off
	Previous		Power on/off		Chromatherapy on/off
	Next		Steam temperature setting		Steam on/off

Control Parts Information for steam Cabin



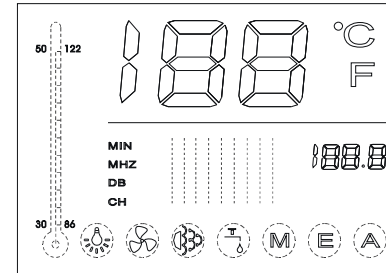
1	Steam Temperature Sensor	6	A. Water Temperature Adjustment B. Water Volume Adjustment
2	LCD Display	7	Back Massage Jet
3	Control Panel	8	Steam Outlet
4	Water Diverter	9	Hand Shower Set
5	A. Water Volume Adjustment B. Vitamin dispenser	10	Steam Generator Cleaning Liquid Inlet

Notes: A: Thermostatic faucet B: VC faucet

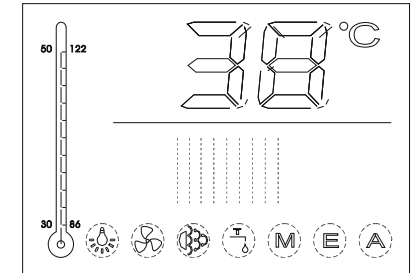


Power on/off

Push any button to light the display and (Picture 1) shows on screen. Push power on/off button now to start the system and (Picture 2) shows on the display. Push power on/off button again to shut off the system. The display and background light for push buttons are turned off. The drain valve for steam generator keeps on for 1 minute.



Picture 1

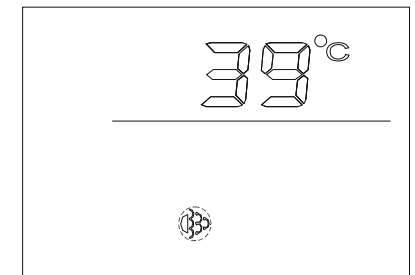


Picture 2



Steam temperature setting

Keep on pushing this button and (Picture 3) shows on display. The figure of temperature is changing from 20 to 59 circularly. Loosen the button when the figure reaches the desired temperature and the figure is set as steam setting temperature. The steam generator stops working when the temperature inside steam cabin is higher than setting temperature. The steam generator starts working automatically when the temperature is lower than setting temperature. The default steam setting temperature is 45 °C/113F if the user does not make any steam temperature setting.

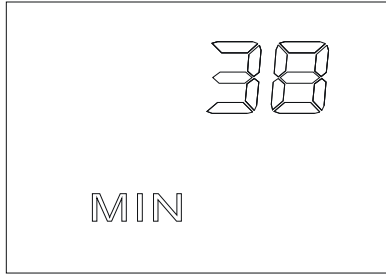


Picture 3



**System time setting**

Keep on pushing this button and ( Picture 4 ) shows on display. The figure is changing from 20–59 circularly. Loosen the button when the figure reaches the desired one and the figure is set as working time for system.



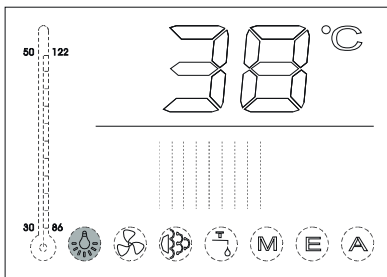
Picture 4

The system is automatically shut off when the working time reaches the setting time. The default working time is 45 minutes if the user does not make setting for working time of the system.

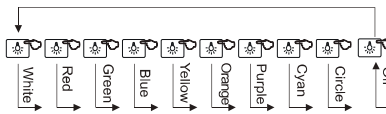


**Chromatherapy**

This button controls the color of chromatherapy lamps. When chromatherapy function starts, the lamp symbol on LCD display twinkles ( Picture 5 ).The order of light color is as below ( picture 6 ) .



picture 5

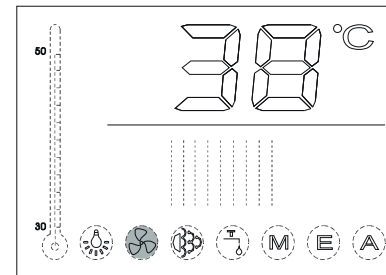


picture 6

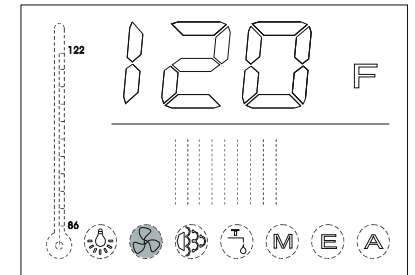


**Ventilator**

- This button turns ventilation on/off. When ventilation is on, the ventilation symbol on LCD display twinkles.
- Celsius/Fahrenheit Conversion: Keep on pushing this button for at least 3 seconds to make conversion between Celsius degree and Fahrenheit degree. And the picture is changing between ( Picture 7 ) and ( Picture 8 ) .



Picture 7

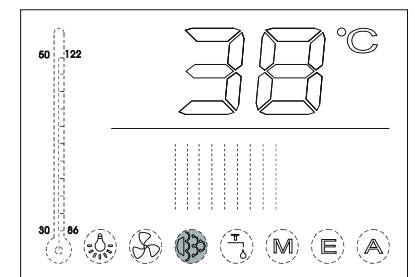


Picture 8



**Steam on/off**

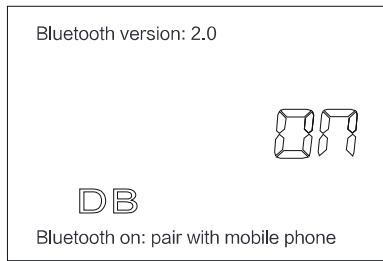
This button turns steam on/off. Push this button, the steam symbol is twinkling on LCD display. The steam function is automatically turned off when the temperature inside steam cabin is higher than the set temperature. And the steam function will be turned on automatically when the temperature inside steam cabin is lower than the set temperature. ( Picture 9 )



Picture 9

 **Bluetooth**

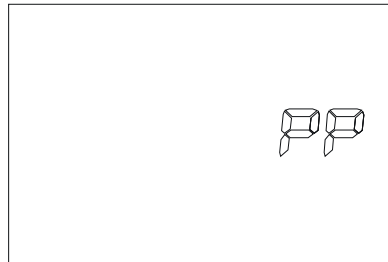
Push the on/off button twice to start the system and push this button. Then turn on the bluetooth on the phone and select 'HW-Audio' to get paired. ( Picture 10 )



Picture 10

 **Play/Pause**

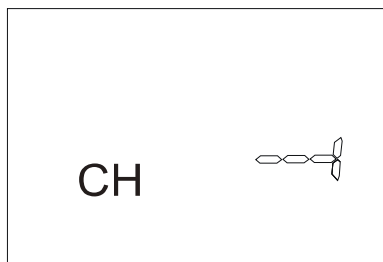
After pairing with mobile phone, push this button to play/pause the music. ( Picture 11 )



Picture 11

 **Previous**  **Next**

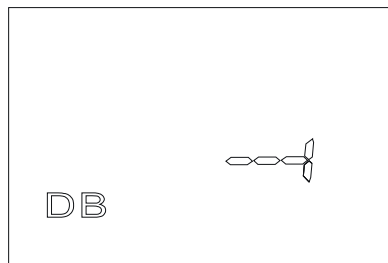
Push previous/next to select music and CH symbol on LCD display twinkles. ( Picture 12 )



Picture 12

 **Volume +**  **Volume -**

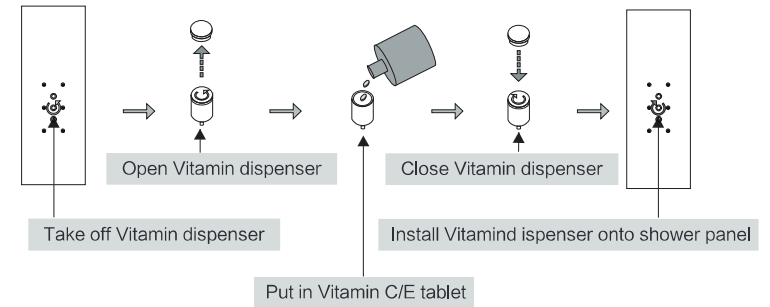
Push these two buttons to adjust the volume. The DB symbol on the LCD twinkles. ( Picture 13 )



Picture 13

● **How to use Vitamin shower**

How to put in Vitamin

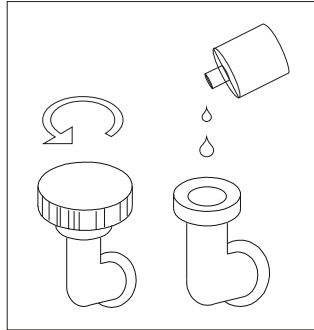


● **How to use Vitamin shower**

Vitamin C tablet could be put into Vitamin dispenser directly; Vitamin E tablets usually has gel coat which should be punctured before it's put into Vitamin dispenser; Please take out Vitamin C/E tablet if the shower is not used for a long time; Other skin care materials such as olive oil could be put into the dispenser as well.

### ● Steam Generator Cleaning

Remove the cover of cleaning liquid inlet and input around 1L of citric acid or acetic acid. Then start steam function to fill steam generator with water. Stop steam function before steam coming out (acid steam has causticity to plated parts. If a lot of acid steam come out, the plated parts become cloudiness after some time.) Do not shut off the control system and keep it on. The scale in the steam generator dissolves in acid liquid and the system drains the dirty water out automatically after 60 minutes. Clean the steam generator every 3 months.



### ● Trouble Shooting for Steam Cabin

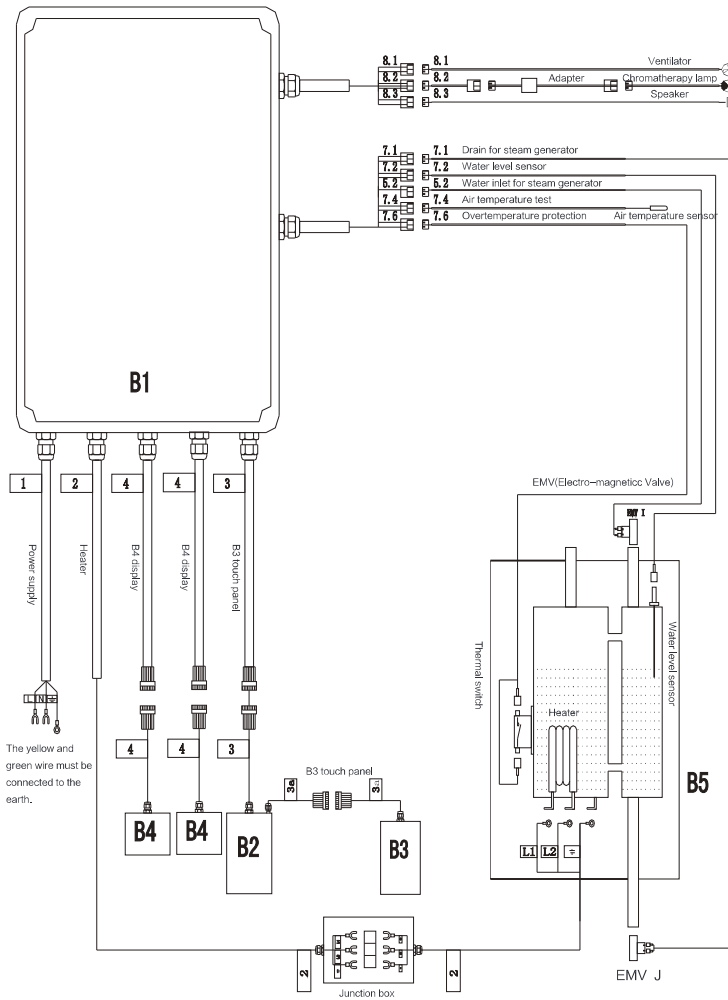
TROUBLE	CAUSE	SOLUTION
Touch panel does not work.	1.Communication line is short circuit or open circuit.	Check connection between control panel and power box.
	2.The control system is wrong.	Change control panel or power box.
No Steam	1.The water supply is shut off.	Turn on the water supply valve.
	2.No water supply in this area.	Use the product when water supply is normal.
	3.The water inlet valve cannot be turned on.	Check water inlet valve and output signal from it.
	4.The water level sensor is wrong.	Clean scale on water level sensor or replace it.

### ● Trouble Shooting for Steam Cabin

TROUBLE	CAUSE	SOLUTION
No Steam	Thermal switch in the heater is wrong.	Change thermal switch installed inside the heater.
	The heater is wrong.	Change the heater.
	The set temperature is lower than room temperature.	Reset temperature.
Steam generator keeps adding water.	The water inlet electro-magnetic valve is wrong.	Replace water inlet valve
	Water level sensor could not detect signal.	Clean scale on water level sensor or replace it.
Power supply is off when on/off button is pushed.	There is creepage from heater.	Replace heater.
	There is creepage from thermal switch inside heater.	Replace thermal switch.
Water leaks from valve.	The seal is damaged.	Change the seal.
Water flow volume is low.	Water supply has impurities and jammed the filter net.	Get filter net cleaned.



● S6 Wiring Diagram



The shaded part is only for the steam room which have double-faced control system.